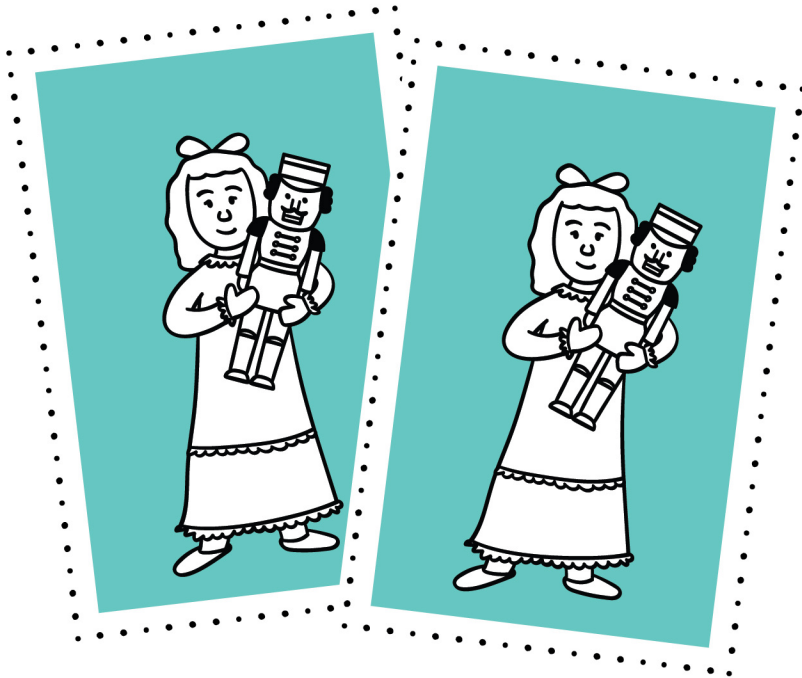


NUTCRACKER CHARACTERS

MATCHING GAME

1. Print two copies of the Nutcracker Characters activity.
2. Carefully cut along the dotted lines to create 16 tiles.
3. Shuffle the tiles and place them face down.
4. On each turn, flip over any two tiles.
5. If the images match, pick up the tiles and keep them.
6. If the images do not match, turn the tiles back over.
7. Continue taking turns until all of the tiles are collected.
8. The person with the most pairs of tiles at the end of the game is the winner!



CLARA



UNCLE
DROSSELMAYER



CHINESE DOLL



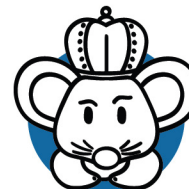
SNOW QUEEN



NUTCRACKER



SPANISH DOLL



MOUSE KING



SUGAR PLUM
FAIRY

